

Corporate Profile

Company Overview

Company Name:	ARUZE CORP.
Head office:	Ariake Frontier Building A, 3-1-25 Ariake, Koto-ku, Tokyo 135-0063, Japan
Business Commerced:	December 1969
Incorporated:	June 1973
Paid-Up Capital:	3,446 million yen
Annual Sales:	49,526 million yen (for the year ended March 2005)
Number of Employees:	1,016 (as of March 31, 2005)
Offices:	Sapporo, Kushiro, Aomori, Morioka, Sendai, Koriyama, Kitakanto (Tochigi), Mito, Niigata, Nagano, Saitama, Tokyo, Chiba, Kanagawa, Shizuoka, Nagoya, Kanazawa, Kyoto, Osaka, Kobe, Okayama, Hiroshima, Shikoku (Ehime), Fukuoka, Kumamoto, Oita, and Kagoshima [Total 27 offices]
Overseas Subsidiaries:	U.S.A.(Las vegas), Australia(Sydney), South Africa(Kyalami)
Factory:	Yotsukaido(Chiba), Yonago(Tottori)
Business Activities:	Planning, development, manufacture and sales of pachislot, pachinko and various other amusement machines
Banks(in alphabetical order):	Aozora Bank, Ltd. Sumitomo Mitsui Banking Corporation and UFJ Bank Ltd.

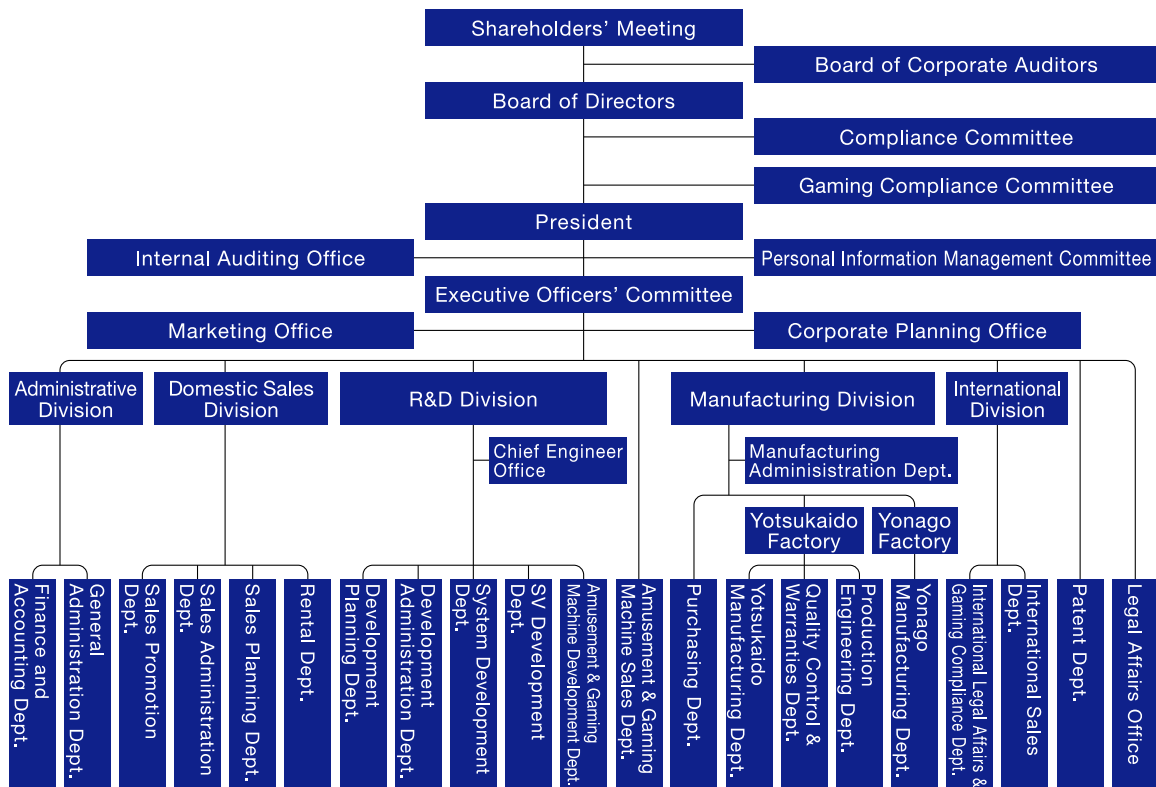
As of June 1, 2005

Member of Board of Directors and Executive Officers

President and Representative Director:	Kazunari Anan
Chairman, Director and Executive Officer:	Kazuo Okada
Vice President, Director, Executive Officer and Senior General Manager of R&D Division:	Jun Fujimoto
Member of Board of Directors, in charge of Compliance:	Yoshito Hori
Member of Board of Directors (outside):	Hiroyuki Sawada
Corporate Auditors:	Koichi Yoshii Yoshiyuki Hiramoto
Corporate Auditors (outside corporate auditors):	Tatsumi Tamura Masataka Fuchigami
Executive Officers:	Mitsuo Kiyokawa Teruhiko Kobayashi Jun Ito Hideaki Ohashi Yoshiki Oba Tatsuo Hikiji Masaki Inoue Hiroomi Nabeshima Nobuo Yaegashi Kenichi Tawara

As of June 29, 2005

Organizational Chart



Aruze Group Data

Aruze's Ownership of Voting Rights

Adores, Inc. (JASDAQ code:4712)	64.3%
Plan, develop, market, design, construct and supervise the construction of amusement facilities, and directly operate them or support hall owners with consulting services for the operation of their facilities.	
SETA Corp. (JASDAQ code:4670)	57.5%
Plan and develop products and systems peripheral to Pachinko and Pachislot machines, as well as gaming software products for the home and commercial markets.	
ELECO Ltd.	100.0%
Plan, develop and manufacture Pachislot machines	
Macy Sales Co., Ltd.	100.0%
Plan, develop and manufacture Pachislot and Pachinko machines	
Mizuho Corp.	100.0%
Plan, develop and manufacture Pachislot and Pachinko machines	
Japan Amusement Broadcasting Corp.	100.0%
Produce and broadcast programming on a digital TV channel devoted to Pachinko/Pachislot-oriented amusement and entertainment	
System Staff Co., Ltd.	100.0%
Provide building maintenance, and real estate Leasing and management services	
Nautilus Inc.	100.0%
Develop gaming software for home use and visual contents	
Forest Entertainment	100.0%
Develop gaming software for home use and visual contents	
P to PA Co, Ltd.	71.1%
Develop conversational interface system	
Aruze USA, Inc.	100.0%
Management of investments in the U.S. (invested in Wynn Resorts, Limited., a hotel & casino operator)	
Aruze Gaming America, Inc.	100.0%
Distribute of gaming machines	
Aruze Gaming Africa (Pty) Ltd	(100.0%)
Distribute of gaming machines	
Aruze Gaming Australia Pty Ltd	(100.0%)
Distribute of gaming machines	

The figure in the parentheses in the column for the ownership of voting rights represents the ownership of indirectly owned voting rights.

Stock Information

As of March 31, 2004

Total shares authorized to issue: 324,820,000

Note: The articles of incorporation state that, "When shares are retired, an equivalent number of shares shall be reduced."

Total outstanding shares: 80,195,000

Number of shareholders: 11,401

Major shareholders:

Name	Number of shares Held	Voting right as % of Total
Kazuo Okada	34,451,500	42.96%
Tomohiro Okada	24,143,000	30.11%
Hiroki Okada	5,325,000	6.64%
Hiroko Yokotsuka	2,449,000	3.05%
Morgan Stanley & Co. International Limited	721,300	0.90%
Goldman Sax International	572,900	0.71%
Hong Kong Special Administrative Region Government Exchange Fund	435,500	0.54%
AOZORA BANK, Ltd	300,000	0.37%
Northern Trust CO. AVFC Re U.S. tax exempted Pension Funds	300,000	0.37%
Commerzbank AG London	285,000	0.36%

Number of Shareholders by category

Individuals and others	11,122	97.56%
Other companies	150	1.31%
Foreign companies and others	101	0.89%
Securities companies	15	0.13%
Financial institutions	12	0.11%

Breakdown of shares held by shareholder category (hundred of shares)

Individuals and others	720,178	89.80%
Foreign companies and others	67,934	8.47%
Financial institutions	10,832	1.35%
Other companies	2,568	0.32%
Securities companies	435	0.05%